

WARNING!

DO NOT SHOOT HOLLOW POINT
OR EXPANDING
AMMUNITION THROUGH THE
WIPE!

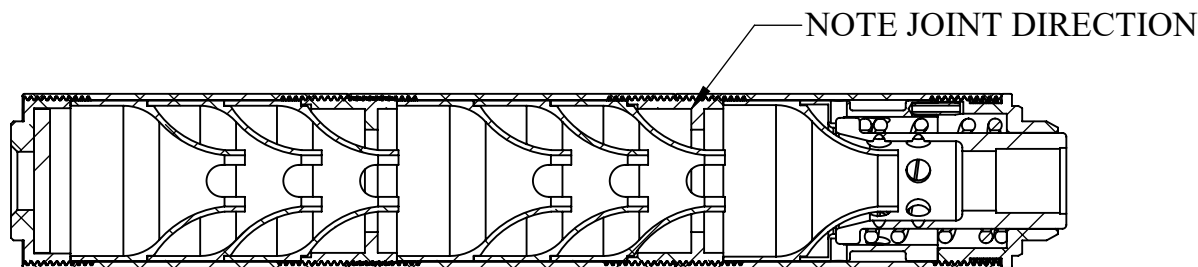
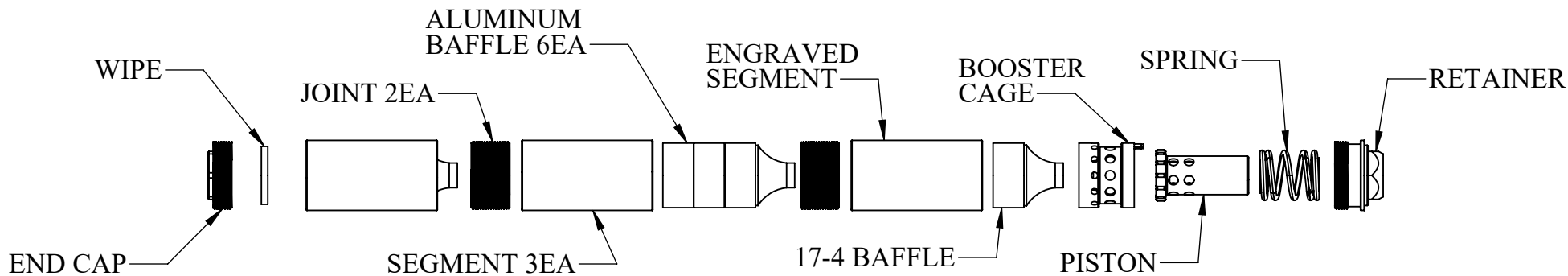
ONLY SHOOT FULL METAL
JACKET AMMUNITION WHEN
USING THE WIPE

(C) Copyright 2019
All Rights Reserved

Rex Silentium, Inc.
Bozeman, Montana
406-624-0669
www.RexSilentium.com



SEG H PISTOL Suppressor Instructions & Configurations



**SEE WEBSITE FOR
CONFIGURATION
ASSEMBLY &
DISASSEMBLY
VIDEOS**

Disassembly:

1. Never attempt to service or disassemble the suppressor while attached to host firearm!
2. Use 15/16" Socket or Wrench for Retainer and End Cap
3. Start disassembly at the END CAP and work towards RETAINER
4. If baffles do not slip out of the assembly, a short wooden dowel can be used to push them out.
5. Clean all components, taking care not to use powder or copper solvents on aluminum parts. Mild soap and water with brushing works well on aluminum components.
6. Once all parts are clean and dry, apply light oil to all components and threads. Take care not to cross thread upon reassembly!

Reassembly:

7. Start reassembly from the RETAINER and work towards the END CAP
8. Place SPRING over the PISTON and place inside the BOOSTER CAGE then place RETAINER over the PISTON.
9. Align the pin on the BOOSTER CAGE with any of the coaxial holes on the RETAINER and place into first SEGMENT (with serial number) and tighten
10. Place 17-4 BAFFLE into first SEGMENT as shown. Push gently to be sure that BOOSTER CAGE pin and RETAINER are properly aligned. If you see the PISTON protrude from the RETAINER while applying pressure to the 17-4 BAFFLE you may proceed. If you do not see the PISTON protrude while applying pressure check alignment of pin.
11. Thread the JOINT or END CAP into the first SEGMENT and hand tighten (with glove or rubber pad). Check for PISTON to protrude from RETAINER. If PISTON protrudes continue assembly, else check alignment of pin.
12. Continue to reassemble according to the configuration you desire as shown above.

(C) Copyright 2019
All Rights Reserved

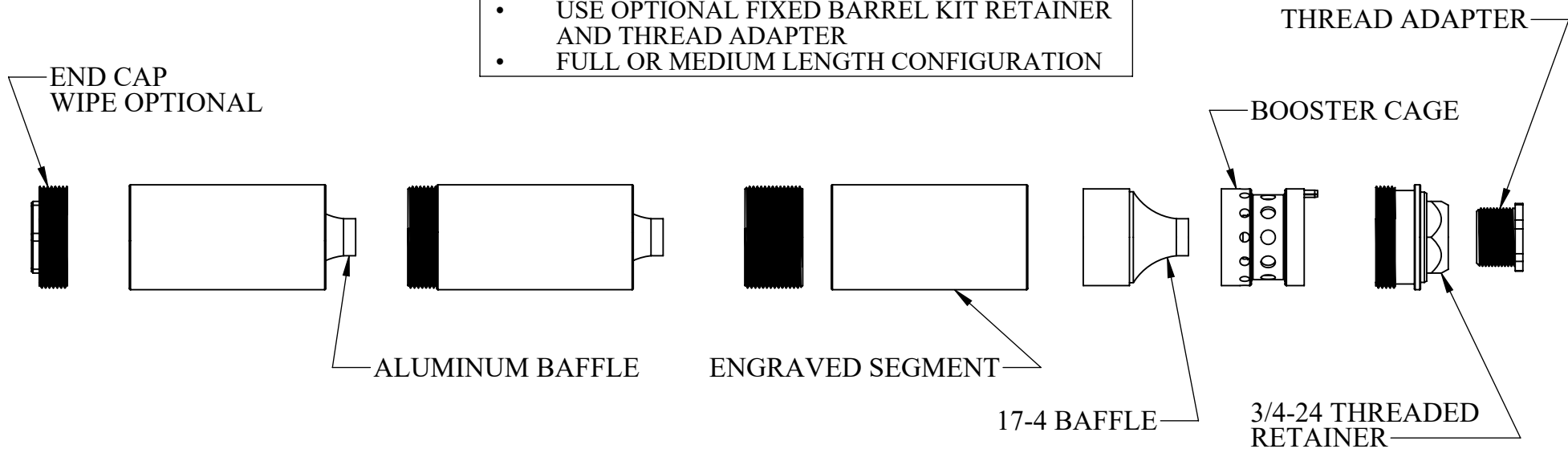
Rex Silentium, Inc.
Bozeman, Montana
406-624-0669
www.RexSilentium.com



SEG H PISTOL Suppressor Instructions & Configurations

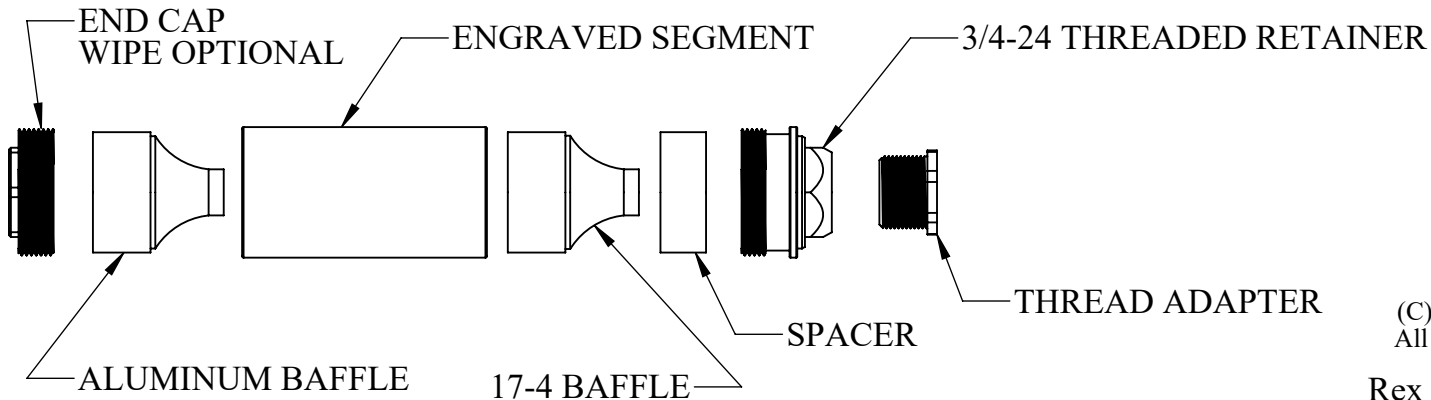
FIXED BARREL CONFIGURATION

- OMIT PISTON AND SPRING
- USE OPTIONAL FIXED BARREL KIT RETAINER AND THREAD ADAPTER
- FULL OR MEDIUM LENGTH CONFIGURATION



COVERT CONFIGURATION

- OMIT PISTON, SPRING AND BOOSTER CAGE
- USE OPTIONAL FIXED BARREL KIT RETAINER, SPACER AND THREAD ADAPTER



(C) Copyright 2019
 All Rights Reserved
 Rex Silentium, Inc.
 Bozeman, Montana
 406-624-0669
www.RexSilentium.com



SEG H PISTOL Suppressor Instructions & Configurations

Warranty and Disclaimer:

All instructions must be read and understood. Seraph Enterprises, Inc. DBA Rex Silentium, Inc. warrants to the retail customer that this suppressor is free of defects in workmanship and/or materials, and that this suppressor meets or exceeds all manufacturing specifications. This warranty for this suppressor only covers repair or replacement at our discretion. THERE IS NO OTHER WARRANTY, EXPRESS OR IMPLIED. There is no warranty for the merchantability of nor the fitness of this suppressor for particular purposes. Specifications and/or designs may change without notice. This warranty does not include or cover: careless handling or use; negligence; improper handling or use; attempted, partial or complete disassembly; abuse; modifications; improper installation; ordinary wear as a result of normal use; use of improper ammunition; or any failure to follow instructions.

Rex Silentium, Inc. shall have no liability in any way for any damages or for any personal injury or death, economic loss, or damage to property.

BEFORE USING THIS SUPPRESSOR:

Make sure the firearm is unloaded and the safety is on. Read all instructions on this page for this suppressor. Failure to do so may result in serious injury or death! Always use extreme caution when handling firearms and suppressors!

AMMUNITION:

Use only factory SAMMI approved ammunition with this suppressor. USE ONLY AMMUNITION OF CALIBER EQUAL TO OR SMALLER THAN THE CALIBER ENGRAVED ON THIS SUPPRESSOR!

INSTALLATION AND REMOVAL:

NEVER INSTALL OR REMOVE SUPPRESSOR ON A LOADED FIREARM! Visually inspect and make sure the firearm safety is engaged, verify firearm is unloaded and remove magazine if applicable. TO INSTALL: make sure muzzle threads and caliber correspond with the suppressor specifications. Carefully thread the suppressor onto the muzzle threads. Hand tighten. DO NOT OVER TIGHTEN. From the rear of the firearm, visually inspect the bore with the suppressor attached to verify that the suppressor does not obstruct the bore of the firearm. Never inspect bore alignment from the front of the firearm! TO REMOVE: ONCE THE SUPPRESSOR HAS COOLED TO ROOM TEMPERATURE, unscrew the suppressor by hand. If necessary, use of a strap-wrench on the rear of the suppressor to loosen. NEVER ATTEMPT TO REMOVE A HOT SUPPRESSOR! KEEP HOT SUPPRESSOR AWAY FROM FLAMMABLE AND COMBUSTIBLE MATERIALS!

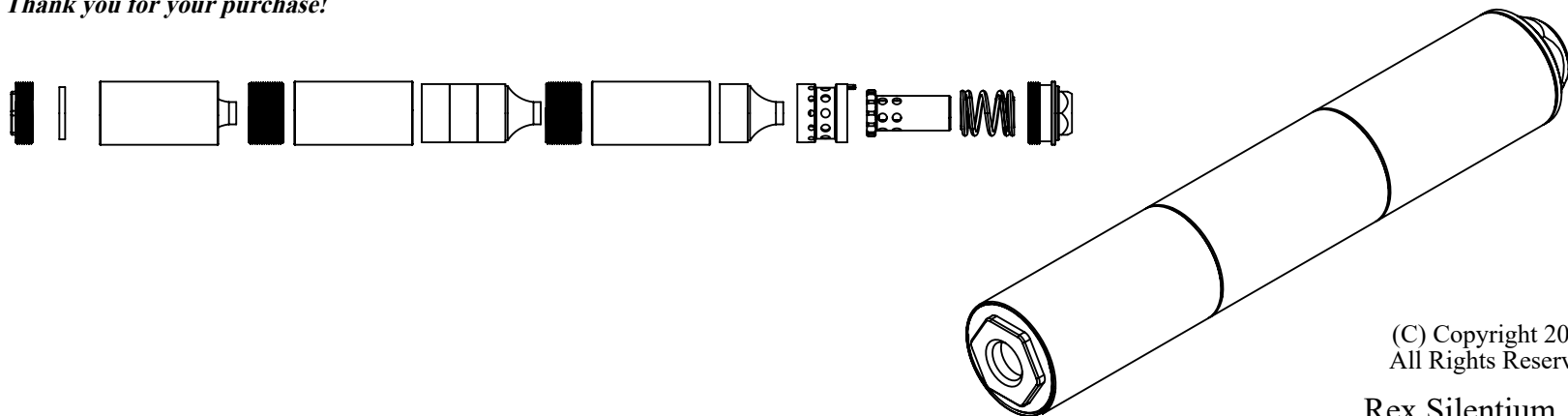
MAINTENANCE:

SEE DISASSEMBLY AND REASSEMBLY INSTRUCTIONS.

REPAIRS:

Contact us before any return is attempted or shipped! To follow legal requirements, you must not ship your suppressor to us until we have reviewed your situation. BATFE REQUIRES A LETTER TO SHIP WITH THE SUPPRESSOR WITH DETAILS ABOUT THE SERVICE OR REPAIR AND REQUIRES PROOF OF OWNERSHIP. YOU MUST PROVIDE A COPY OF THE FIRST PAGE OF YOUR FORM 3, FORM 4 OR FORM 5 IN ADDITION TO THE REPAIR LETTER. A SERIAL NUMBER CANNOT BE TRANSFERRED TO A NEW SUPPRESSOR OR TUBE.

Thank you for your purchase!



(C) Copyright 2019
All Rights Reserved

Rex Silentium, Inc.
Bozeman, Montana
406-624-0669
www.RexSilentium.com

