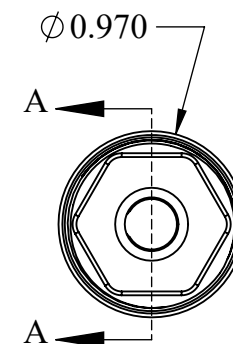
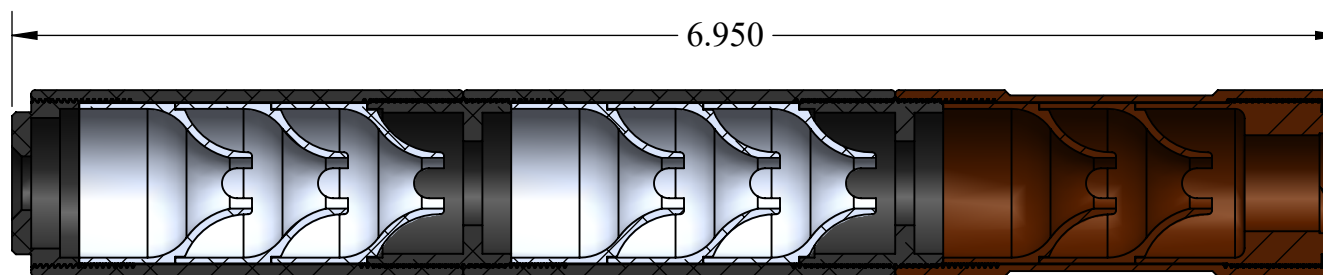
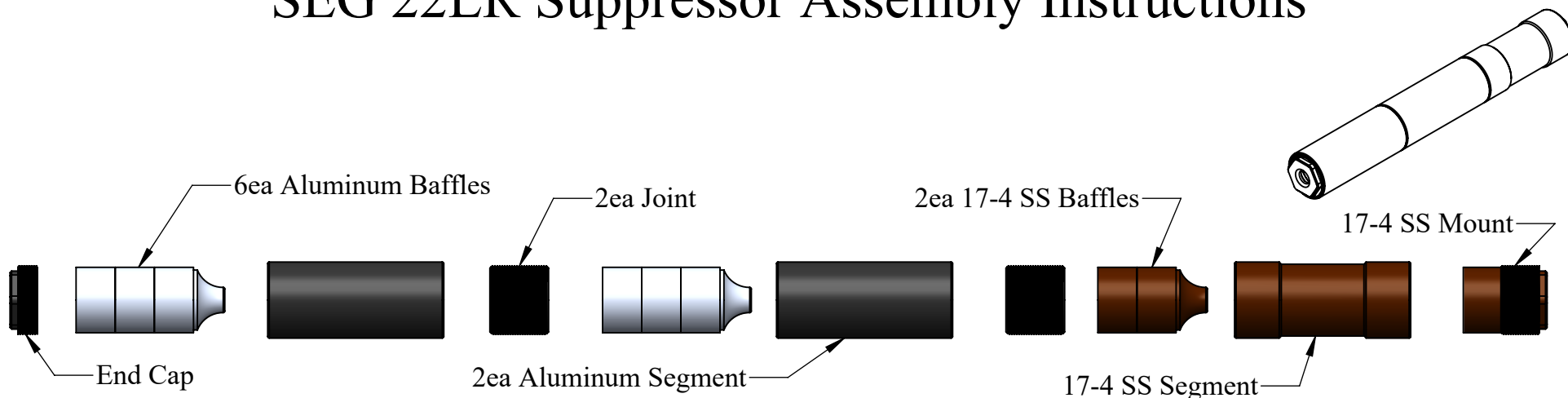


# SEG 22LR Suppressor Assembly Instructions



1/2-28 Thread

## Disassembly:

1. Never attempt to service or disassemble the suppressor while attached to host firearm!
2. Using 3/4" wrench or socket, remove end cap and 17-4 SS mount.
3. If baffles do not slip out of the assembly, a short wooden dowel can be used to push them out.
4. Clean all components, taking care not to use powder or copper solvents on aluminum parts. Mild soap and water with brushing works well on aluminum components.
5. Once all parts are clean and dry, apply light oil to all components and threads. Take care not to cross thread upon reassembly!

## Reassembly:

6. Thread the 17-4 SS mount into 17-4 SS segment 1 until flush or slightly under-flush.
7. Place the 2 17-4 baffles in 17-4 segment 1 as shown.
8. Thread joint (or end cap if short configuration is desired) with deep hole facing out as shown into segment 1 snugly to secure baffles.
9. Thread aluminum segment to joint and place 3 aluminum baffles in the segment as shown.
10. Thread joint (or end cap if medium configuration is desired) with deep hole facing out as shown into aluminum segment snugly to secure baffles.
11. If long configuration is desired repeat step 10.
12. Once assembly is complete, check the segments for hand tight fit and use a 3/4" wrench or socket to tighten the cap and the mount.

(C) Copyright 2019  
All Rights Reserved

Rex Silentium, Inc.  
Bozeman, Montana  
406-624-0669

[www.RexSilentium.com](http://www.RexSilentium.com)

